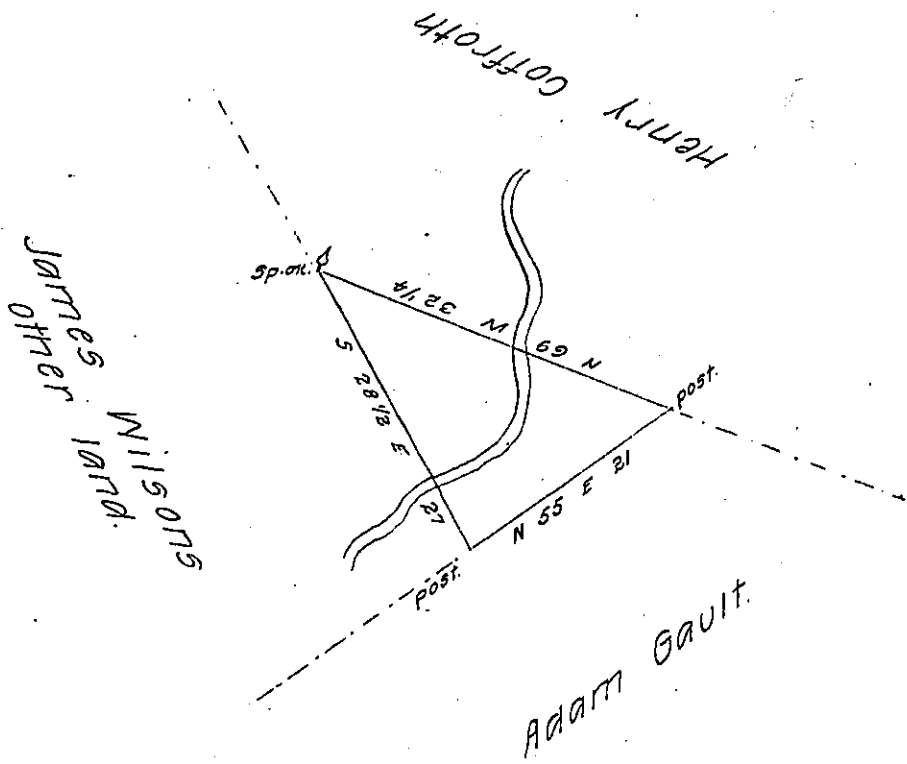


FORM NO 1.



Draught of a small piece or tract of land situate in Salisbury Township Lancaster County Containing One acre and 105 ps and the Usual Allowance of six P Cent for roads &c. Surveyed the First day of September A.D. 1790 for James Wilson. By Virtue of a Warrant Dated the 15th Day of March A.D. 1790.

Pr. Henry Ream D. Sr

To Daniel Brodhead Esq^r
Surveyor General.

IN TESTIMONY that the above is a copy of the original remaining on file in the Department of Internal Affairs of Pennsylvania, made conformably to an Act of Assembly approved the 16th day of February, 1833, I have hereunto set my Hand and caused the Seal of said Department to be affixed at Harrisburg, this twenty-second day of June 1907.

Henry Houck
Secretary of Internal Affairs.